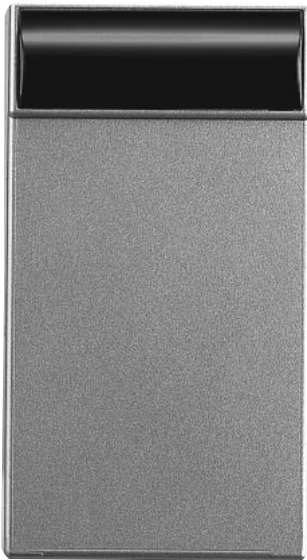


Audio Guidance System

XA-GT1TN

Infrared address transmitter



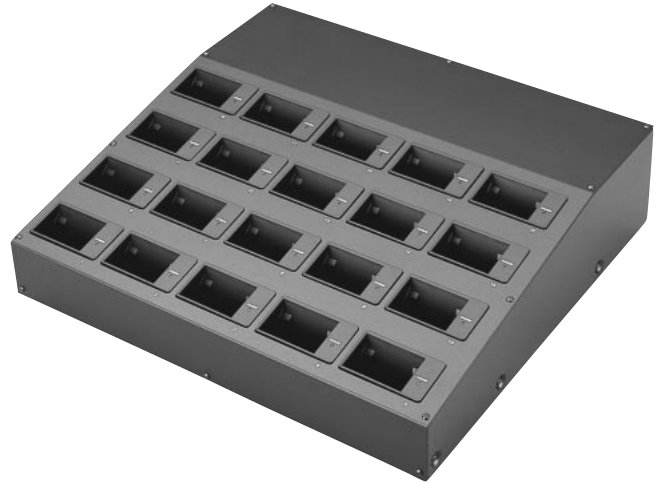
- Install one for each exhibit when the manual pointing start system is used. Install on a ceiling or wall near the entrance when the auto start system is used.

XA-GT1TN infrared address transmitter

Transmission system	Proprietary code infrared address transmission
Address system	Mini rotary x 3 (code No. 000 - 255)
Directivity angle	Horizontal direction: about ± 20 degrees for auto setting; about ± 45 degrees for point setting Vertical direction: about ± 20 degrees
Effective range	About 7 m (depending on the installation conditions)
Power supply	Specified AC adapter (DC 12 V $\pm 10\%$, 0.4A)
Dimensions	120.5 (W) x 66.0 (H) x 28.0 (D) mm (4-3/4" x 2-5/8" x 1-1/8")
Weight	Approx. 110 g (0.25 lbs.)
Accessories	Installation brackets

XA-GC20BK

Charger



- 20 players can be fully charged simultaneously in about 3 hours.

XA-GC20BK charger

Number of rechargeable units	Up to 20
Charging time	About 3 hours (with indications for "during charging" and "charging complete")
Power consumption	270 VA
Power requirements	110 —240 V, 50/60 Hz
Dimensions	477 (W) x 138 (H) x 438 (D) mm (18-13/16" x 5-7/16" x 17-1/4")
Weight	Approx. 7.5 kg (16.6 lbs.)
Accessory	Power cord

Optional accessories

SSA1205A9:
AC adapter for infrared address transmitter